



## **Weekly Newsletter for the 23rd of December 2025**

**Our Purpose - To Sustain or Enhance Members' Mental Health and Wellbeing.**

---

Read the whole newsletter before clicking any links.  
Otherwise you could get lost and miss out on some vital information.

## **The Big Day's Nearly Here!**



Well Sheddies, its the end of another year!

We've achieved a lot this year, both in the shed , our community and our personal projects.

This is a time to reflect, be grateful for what we have, and look forward to another year of challenges and opportunities.

On behalf of your Board, we thank you for being such a wonderful group to work and mix with, for your contributions to our small community, and for the humour and fellowship that have grown throughout the year.

Enjoy your time with family and friends, to celebrate the festive season.

We look forward to lots of companionship and rewarding projects, in the coming year.





# Shed Projects

## Readymix Concrete Project.

**Ready, Steady, Mix !**

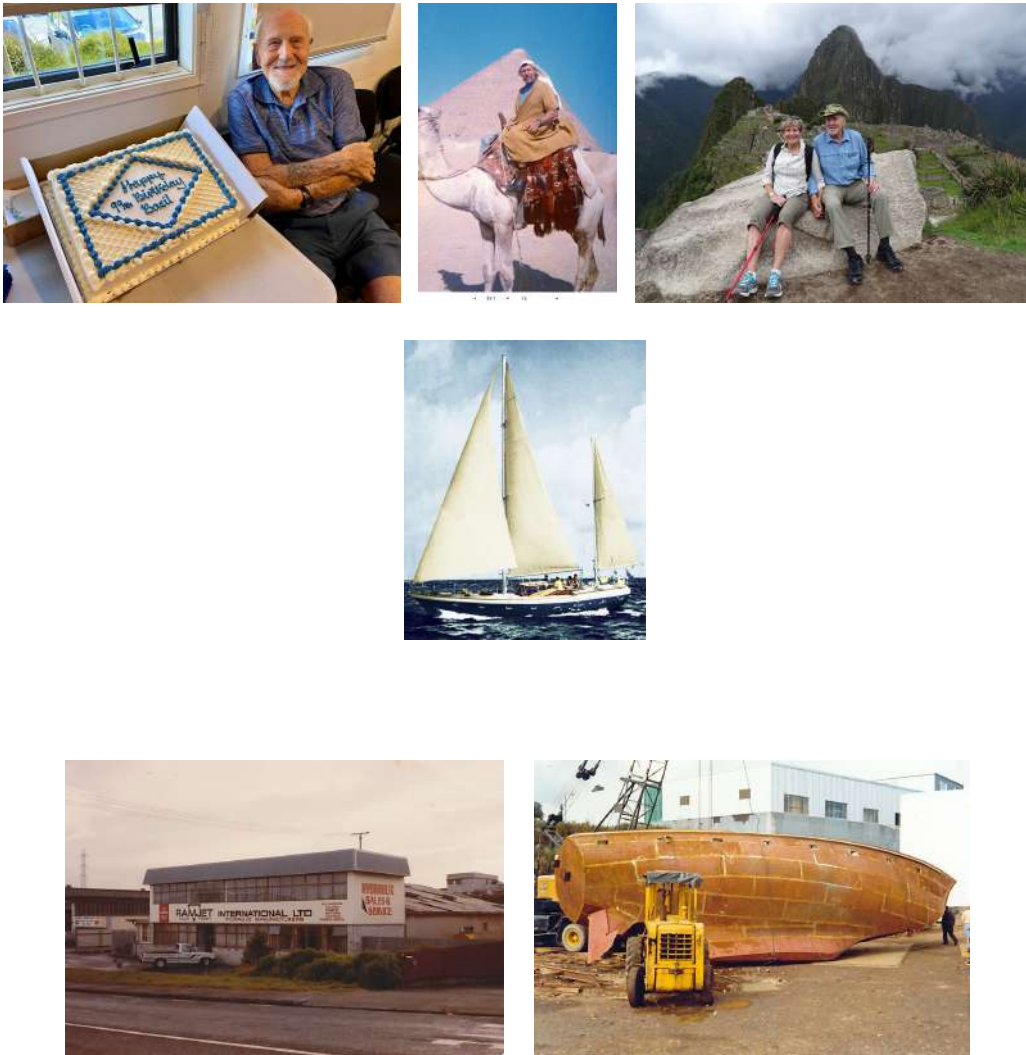


An "old school" Ready mix concrete team, powered into action last week, to build a pad for our planned dust extraction system. Using our trusty truck, we collected a pile of builders mix and cement , then set up a chain gang to mix, pour, screed and float.

Another step in our site improvement program

## **Basil Campion**

**A life well lived.**



On Friday we had a session at morning tea to honour Basil who Nancy brought along –

Michael Jones did some background work and we showed some photos on the screen of some of his endeavours –

There is a book published by his family, in our library, telling the full story of Basil's interesting life.

It is highly recommended, as a fascinating read.

Inspirational, because it demonstrates what can be achieved with a limited education and humble means. To live a great life borne out of pure determination and buckets of initiative.

We had a hearty sing song of – "For he's a jolly good fellow" and a barbecue at lunchtime.

This was an excellent meal with ham carved off the bone by our retired Plastic Surgeon.

**Basil is our oldest Member and his 100th birthday is in February**

What a diverse group of folks we are !

## **Christmas Opening Hours**

The shed will be open for business throughout the Christmas period so your projects can be progressed.

We will be closed on the 25th of December, Thursday (Christmas Day) and the 1st of January, Thursday (New Years Day) but otherwise Duty Managers are rostered and the shed will be open.



**Go To Eastern Bays Songbird latest [NEWS HERE](#)**

## **January Barbecues**

**Tuesday 13th and Friday 30th**

**At Midday**

## **Family Day**

**Saturday 7th February 2026**

**10 am - 2 pm**

## **Panmure Basin Fun Day**

**Sunday 8th March 2026**

**10am - 2pm**

## **Mal's Corner**

**Dear Santa – I would like a new birthday suit this year –  
my current one is old and wrinkled.**

**The answers to Life's questions  
lie inside you.**

**All of us could take a lesson from the weather –  
it pays no attention to criticism.**

**Merry Christmas !**

Kevin H (ed)

**MENS SHED AUCKLAND EAST INC**

**Waatarua Reserve, 98 Abbotts Way, Remuera, Auckland 1050, New Zealand**

**Facebook: Search Men's Shed Auckland East**

**Website: [www.msae.nz](http://www.msae.nz)**

**Email: [mensshedaucklandeast@gmail.com](mailto:mensshedaucklandeast@gmail.com)**

**Landline: 09 880 9800**

**News or notices: send to: [editor@msae.nz](mailto:editor@msae.nz)**

**MSAE BANK Account Number .... ASB 12 3618 0064616 00**

**Donations gratefully accepted and go towards building a stunning**

**Community Facility for members today and far into the future.**